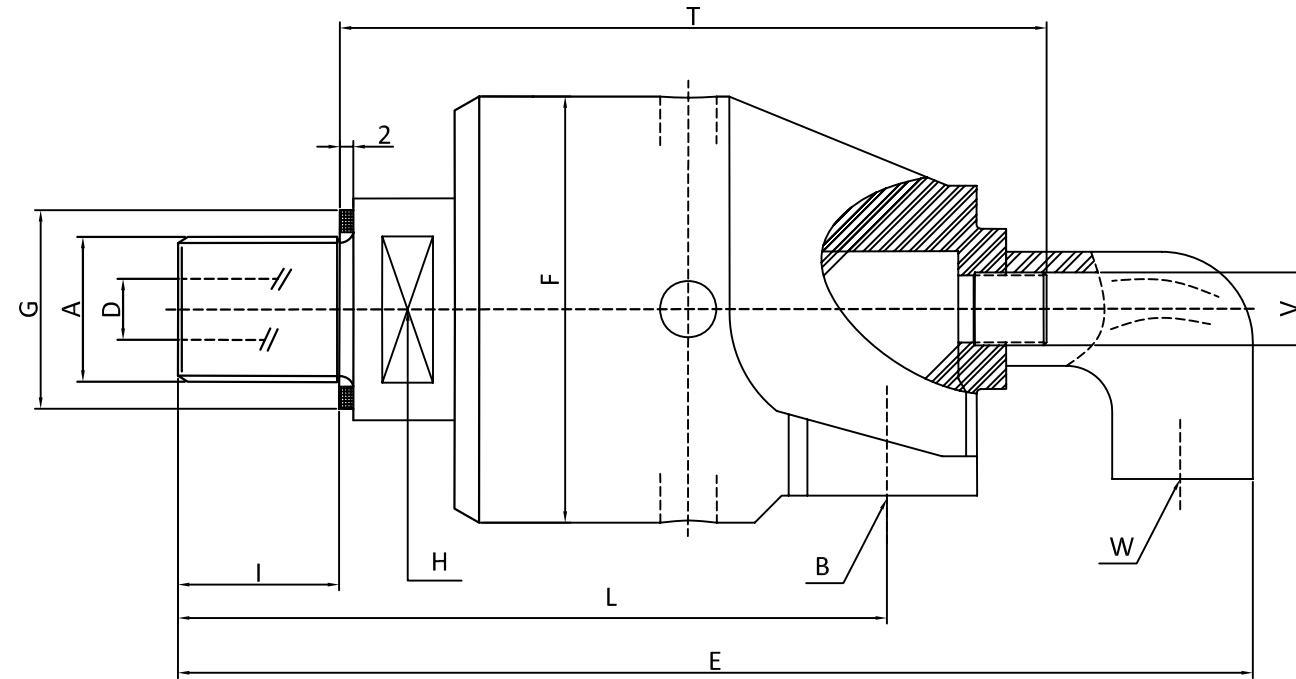


Projection



OUTLINE DIMESION (UNIT) mm												
TYPE	A	B	D $\phi$	E	F $\phi$	G $\phi$	H	I	L	T	V	W
QS-G3/8	G3/8	G3/8	9	129	43	25	17	13	73	97	6	G1/4
QS-G1/2	G1/2	G1/2	13	146	55	30	24	13	82	110	10	G3/8
QS-G3/4	G3/4	G3/4	18	173	64	37	30	16	94	129	13	G1/2
QS-G1	G1	G1	23	200	70	45	36	20	105	148	16	G1/2
QS-G1 <sup>1/4</sup>	G1 <sup>1/4</sup>	G1 <sup>1/4</sup>	31	224	85	55	46	22	119	162	22	G3/4
QS-G1 <sup>1/2</sup>	G1 <sup>1/2</sup>	G1 <sup>1/2</sup>	36	256	92	60	55	24	132	183	26	G1
QS-G2	G2	G2	48	281	110	70	60	25	139	199	32.2	G1 <sup>1/4</sup>

Working parameters:  
 Max.Speed: 6000RPM  
 Max.pressure: 7500PSI  
 Temperature Range: 5°Cto128°C  
 Medium type :water gas oil and so on  
 Materials :Stainless steel  
 Passage:1 Passage

1					
2					
3			Size range	Allow poor	
4	Change content		Date		

**HIDNEY**

HIDNEY ELECTRONICS

Drawing	Design	Audit	Approval		seals	Dynamic seal		
					material	Stainless steel	name	rotay joint
Date of publication					bearing	High speed ball bearing	number	NO.ONE
					weight		Model	

1

2

3

4

5

6