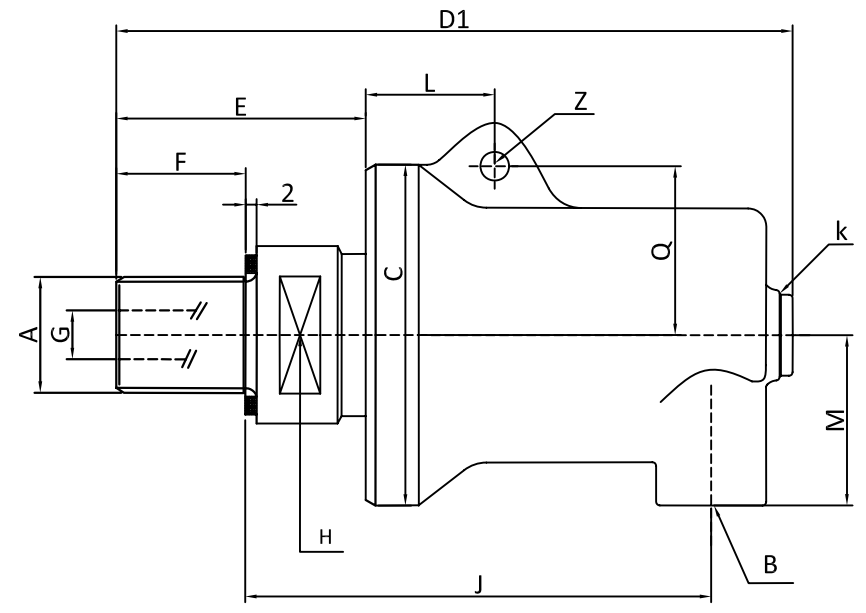
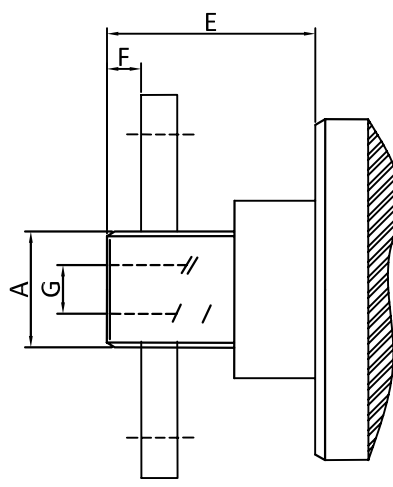


Projection



OUTLINE DIMESION (UNIT) mm															
DN	TYPE	A	B	CØ	D1	E	F	H	J	K	L	M	Q	Z	-
20	DS-G3/4	G3/4	G3/4	87	155	48	19	27	109	G1	37	51	49	12	-
25	DS-G1	G1	G1	97	184	60	22	32	129	G1	38	54	54	13	-
32	DS-G1 ^{1/4}	G1 ^{1/4}	G1 ^{1/4}	112	206	65	25.4	41	140	G1 ^{1/2}	42	66	60	13.5	-
40	DS-G1 ^{1/2}	G1 ^{1/2}	G1 ^{1/2}	136	230	68	28.5	46	153	G1 ^{1/2}	55	79	73	16	-
50	DS-G2	G2	G2	155	252	72	30	60	168	G1 ^{1/2}	62	62	87	16	-

Working parameters:
 Max.Speed: 6000RPM
 Max.pressure: 7500PSI
 Temperature Range: 5°Cto128°C
 Medium type :water gas oil and so on
 Materials :Stainless steel
 Passage:1 Passage

1						HIDNEY	Drawing	Design	Audit	Approval		seals	Dynamic seal		
2												material	Stainless steel	name	rotay joint
3			Size range	Allow poor				Date of publication				bearing	High speed ball bearing	number	NO.ONE
4	Change content		Date				HIDNEY ELECTRONICS					weight		Model	